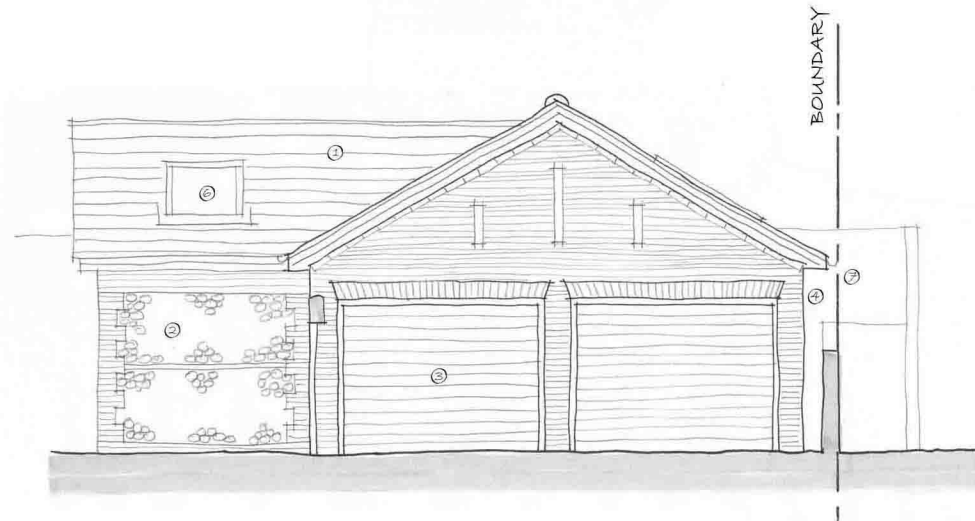
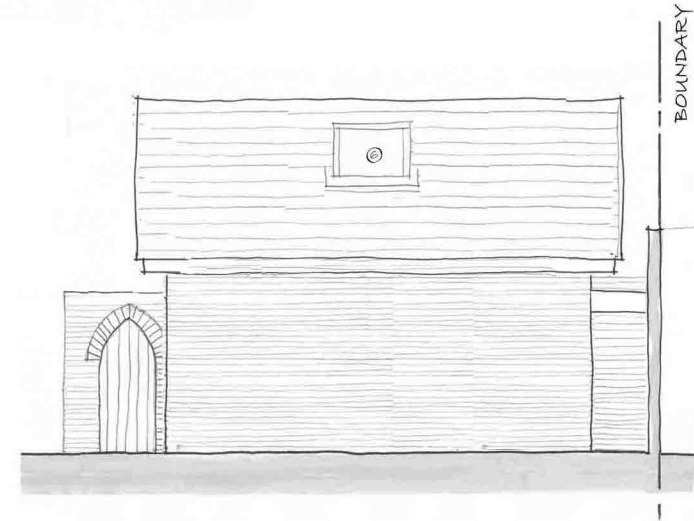


MATERIALS

- 1 SLATE WITH CLAY RIDGE TILE
- 2 BRICK AND FLINT WALL
- 3 METAL ROLLER GARAGE DOOR
- 4 TIMBER SOFFITS, FASCIAS, BARGE BOARDS AND EAVES PAINTED
- 5 WINDOWS, DOORS AND GATE TO BE WOODEN PAINTED
- 6 ALUMINIUM FRAMED ROOFLIGHTS
- 7 GUTTERS AND DOWNPIPES TO BE BLACK PLASTIC UPVC



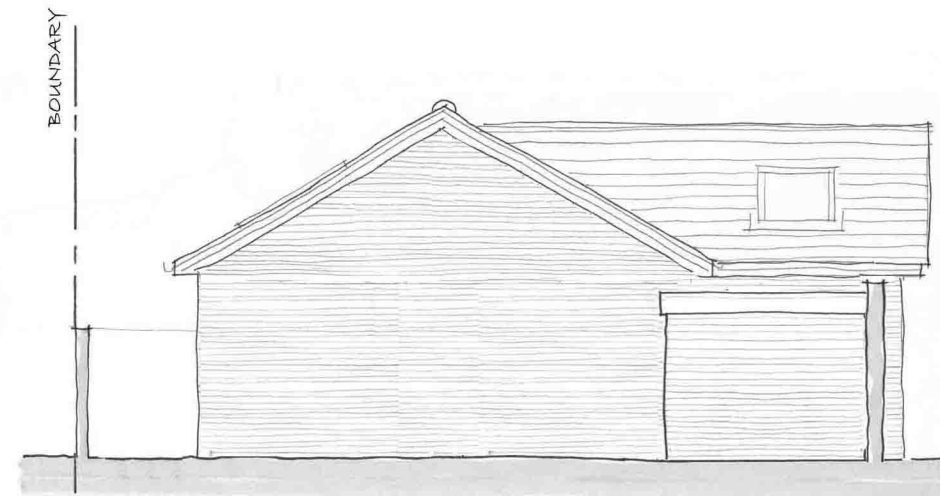
SOUTH ELEVATION



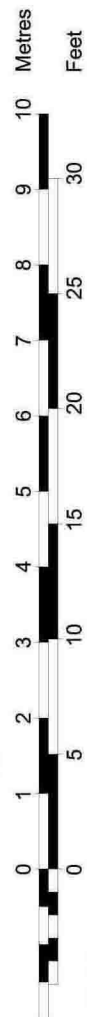
EAST ELEVATION



WEST ELEVATION



NORTH ELEVATION



NO 3 + 4 RAILWAY TERRACE, ALTON  
SKETCH ELEVATIONS

09\_10/05

SEPTEMBER 2010  
SCALE 1:100 @ A3

Sunstone  
Design

ARCHITECTURAL  
CONSULTANTS

T 01962 713873  
F 01962 713873  
E studio@sunstonedesign.co.uk  
A Sunstone, The Avenue,  
Twyford SO21 1NJ